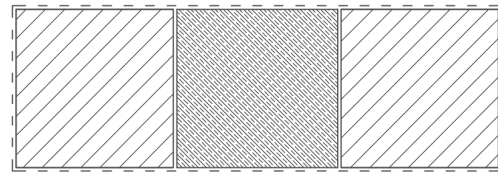
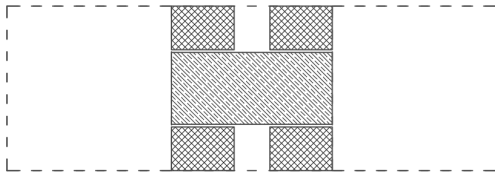


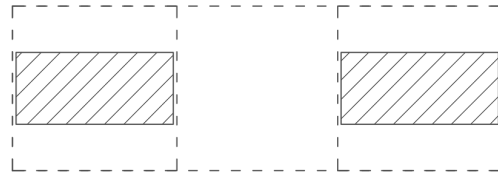
1. Circulation verticale
[32 habitants]



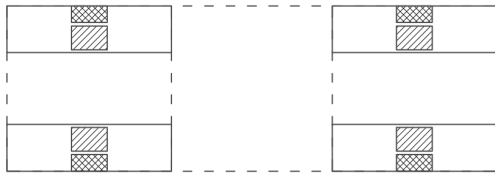
2. Espace collectif sur deux niveaux
[16 habitants]



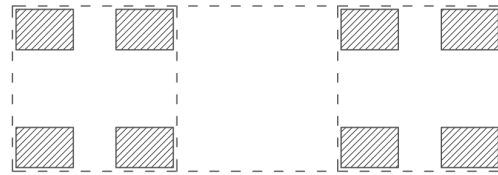
3. Séjour + mezzanine + espaces extérieurs partagés
[16 habitants]



4. Cuisines et salles à manger collectives
[8 habitants]



5. Salle d'eau et balcon partagés
[2 habitants]



6. Chambres individuelles
[1 habitant]